

1950nm high power single mode single stage fiber isolator operating power 10W, peak power 10KW



● Product Description

Idealphotonics' optical isolator products can maintain excellent return optical isolation performance under any polarization state. It has low loss, high isolation, high return loss, low polarization-dependent loss, low polarization mode dispersion, wide operating band and operating temperature range, and no glue in the optical path. These properties provide the possibility of low-cost solutions for communication networks. This series of products can be used in erbium-doped amplifiers, wavelength division multiplexing systems, fiber optic equipment and lasers. The typical wavelengths of our high-power isolators are currently 1064/1310/1550/1950/2000/2050nm. Our target customers are fiber laser manufacturers, EDFA manufacturers and scientific research university customers.

● Part Number

MIR-ISO-W1950-S11-H10-1-9-SMN

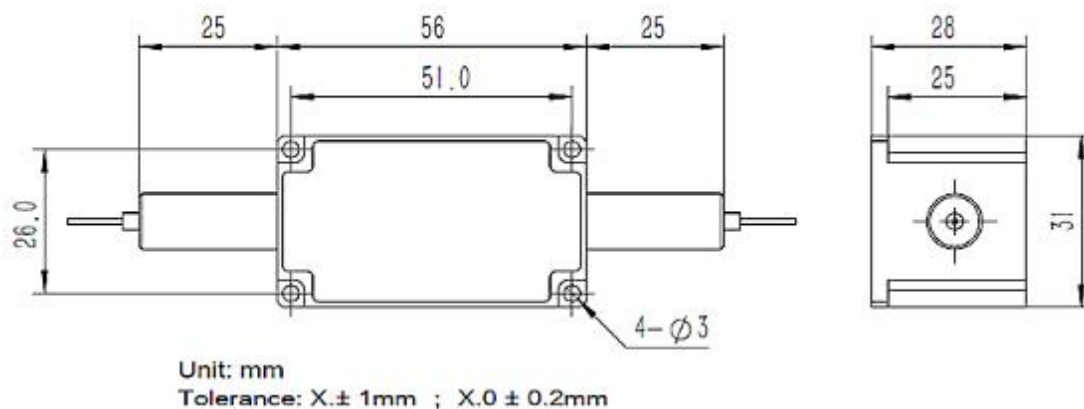
● Product features

Wide operating wavelength range & wide operating temperature range、 Low insertion loss & high isolation 、 Low polarization-dependent loss and polarization mode dispersion、 No glue in the optical path, high power、 High reliability and stability

● Application area

Fiber amplifier、 WDM & DWDM system、 Fiber equipment、 Fiber laser

Dimensional Drawing



Parameters

Parameter	Unit	Value	Notes
Wavelength (nm)	nm	1950	Other wavelength can customizable
Insertion loss	dB	≤0.8	1950nm, 3mw, DFB
Isolation	dB	≥32 single stage	@25Celsius
		≥50dB dual stage	
Isolation	dB	≥25	Full temperature: -40+75℃
Polarization-dependent loss	dB	≤0.1dB	

Fiber type	N/A	Nufern	SM1950/SMF-28E	Other wavelength can customizable
Polarization film dispersion	Ps		<0.25	
Polarization dispersion	Ps		<0.05	
Return loss(light in / light out)	dB		>60/55dB	
Max. operating power	W		10	
Max. Peak power	KW		10	
Operating temperature	°C		-5-70°C	
Storage temperature	°C		-40-85°C	
Test light			1950nm benchtop light	
Package dimension (mm)			As shown below	

Note: *. All indicators are without connectors and are only valid at the above wavelengths, polarization states and temperatures.

** . Indicators are subject to change without prior notice.

Ordering Information

MIR-ISO-W□□□□-S○-H▽-☆-△-XX

W□□□□: Wavelength

0980: 980nm

0850: 850nm

1064: 1064nm

1310: 1310nm

1950: 1950nm

2000: 2004nm

S○: Stage Numbers

11: single stage isolator

22: dual stage isolator

P▽: Package

1: Standard

2: Mini

☆ : Handling Power

0.5:500mw

1: 1W

10: 10W

△: Loose Tube

B: Bare Fiber

9: 900um Loose Tube

20: 2mm Loose Tube

30: 2mm Loose Tube

XX: Fiber and Connector Type

SA=SM1950+ FC/APC

SP=SM1950+ FC/PC

PA=PM1950 Fiber+ FC/APC

PP=PM 1950Fiber+ FC/PC