

# 1550nm single mode fiber optic connector/patch cord



## ● Product Description

Fiber optic patch cords (also known as fiber optic connectors) are optical cables with connector plugs installed on both ends to achieve active connection of the optical path. Idealphotonics Photonics' fiber optic patch cords have high-quality, narrow-pin ceramic FC/APC connectors on both ends. Produced by our equipment, each patch cord is individually tested at the test wavelength listed in the specification label to ensure the extinction ratio and low back reflection (return loss) when connecting fibers. These patch cords are in stock and have high-quality polishing to ensure a typical return loss of more than 60 dB.

## ● Part Number

SM-1310/1550-2-1-FC/APC

## ● Product features

Typical 60 dB return loss、 Ceramic ferrule, angled 8° (APC)、 Ø3 mm outer protective layer、 Custom patch cords available

## ● Application area

Fiber optic communication system、 Fiber optic access network、 Fiber optic data transmission、 Fiber optic CATV、 Local area network (LAN)、 Test equipment、 Fiber optic sensor

## Parameters

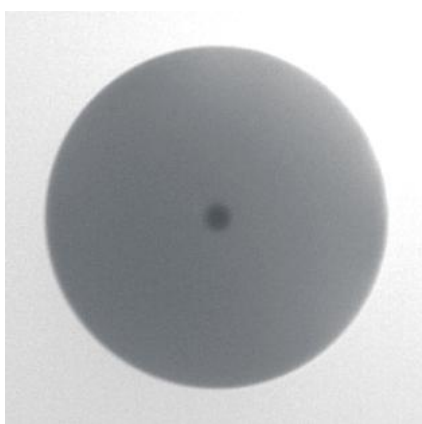
### Specifications

PN#	SM-40 5-2-1 FC/APC	SM-63 3-2-1- FC/APC	SM-78 0-2-1- FC/APC	SM-106 0-2-1- FC/APC	SM-1310/1550- 2-1-FC/APC	SM-1950-2-1 -FC/APC
Test wavelength	405 nm	630nm	780nm	1060nm	1550nm	1950nm
Operating wavelength	400 - 680 nm	620 - 850 nm	770 - 1100 nm	970 - 1550 nm	1270 - 1625 nm	1750 - 2100 nm
Cut-off wavelength	380 ± 20 nm	570 ± 50 nm	720 ± 50nm	920 ±50 nm	1200 ±70 nm	1620 ±80 nm
Fiber type	SM 405	SM630 nm	HI780	HI1060	SMF -28e	SM1950
Maximum insertion loss	1.5 dB	0.5 dB	0.5 dB	0.5 dB	0.5 dB	0.5 dB
Mode field diameter	3.6±0.5 um @ 405 nm	4.0±0.4um @ 630 nm	4.6±0.5 @ 780 nm	6.2± 0.3 @1060 nm	10.40.5 @ 1550 nm	8.6 um @ 1950 nm
Numerical aperture	0.12	0.13	0.14	0.14	0.14	0.14
Return loss	60 dB Typical					
Fiber connector	FC/APC-FC/APC(FC/FC-FC/FC, FC/APC-FC/FC) optional					

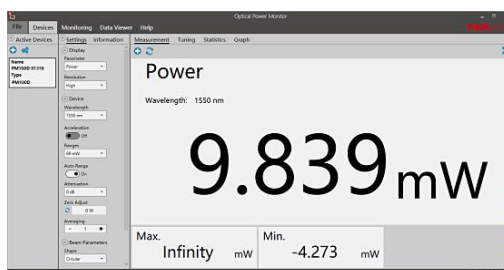
Fiber length	1 meter (length can be customized)
Loose tube type	900um/2mm/3mm loose tube optional
Operating temperature	0 to 70 °C
Storage temperature	-45 to 85 °C

1550nm single mode fiber optic patch cord test

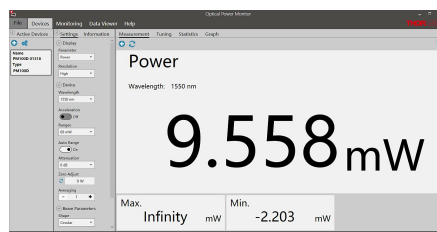
1. End face test



2. Insertion loss test



Laser power before connecting to fiber patch cor.



Test the power after connecting the optical fiber patch cord

#### Ordering Information

SM-633-2-1-FC/APC

SM: Single Mode

633: 633nm

2: 2mm loose tube

1:1m

FC/APC; connector FC/APC-FC/APC

PN#	Description
SM-633-2-1-FC/APC	633:633nm, 2:2mm loose tube, 1:1 meter length, FC/APC connector